

FREE
SCHEDULE

The 77th Annual
SMALL DOLE
Horticultural Society
SUMMER FAYRE

featuring

FUN DOG SHOW
CHILDREN'S AMUSEMENTS

Teas, Cake and BBQ
Prosecco & Pimms Tent
Local Brewery

Evening Live Band

SATURDAY
9TH AUGUST 2025

1.30pm to 10pm
at Mackley's Sports Field

Entrance to display marquee 50p (children free)

This exhibit schedule is free!

R.J. MEAKER FENCING LTD

Family Run Est. 1968

Fencing, Shed, Gate Specialists & D.I.Y Centres

Full Fixing Service Available - Domestic & Commercial

Free Estimates & Advice

- | | | |
|---------------|-----------------|----------------------|
| • Panels | • Chainlink | • Sheds |
| • Gates | • Iron Railings | • Summer Houses |
| • Close Board | • Weldmesh | • Play Houses |
| • Trellis | • Landscaping | • Garden Furniture |
| • Palisade | • Decking | • Wood Preservatives |

HEAD OFFICE 01273 414786

D.I.Y CENTRES

Henfield - Henfield Road, Small Dole BN5 9XJ - 01903 879338

Portslade - 11-13 Middle Street, BN41 1DP - 01273 430073

Peacehaven - 29 Southcoast Road, BN10 8SZ - 01273 584800



estimates@rjmeakerfencing.co.uk

www.rjmeakerfencing.co.uk

EXHIBIT SCHEDULE INTRODUCTION

After a three-year pause, we're thrilled to be back, and excited to celebrate our 77th year with a mix of cherished traditions and fresh new highlights!

First, we want to extend our heartfelt thanks to several long-serving committee members who have recently stepped down. Their dedication and years of hard work have played a vital role in the show's ongoing success, and we are truly grateful for the time, energy, and passion they poured into making it a success.

As we move forward, we're pleased to welcome new committee members and are confident that, with their enthusiasm and your support, we'll continue building on everything that's made this event so special over the years.

WHAT TO EXPECT ON THE DAY

There's plenty to look forward to at this year's show!

We're kicking off at 1:30pm and, for the first time, running right through to the evening, finishing at 10:00pm. It's going to be a full day of fun with something for everyone.

Enjoy classic entertainment like the Punch & Judy show, live evening music from Southdown Funk, and a great selection of refreshments including Aleworks Brewery, Pimms & Prosecco, and a BBQ. Kids can enjoy a range of amusements, and of course, the tea and cake tent will be back, this year joined by The Barista Project serving up hot drinks. We'll also be hosting the Horticultural Flower Show in our show marquee and the ever-popular Fun Dog Show.

Entry to the field is free for pedestrians, and car parking is available.

Entry to the marquee show tent opens at 2:00pm and requires a minimum donation of 50p (children under 16 go free).

By coming along, entering, or even just spreading the word, you're helping to keep this cherished community event going strong. We welcome entries from all ages and experience level, and we'd love to see more local residents join in.

If you're interested in supporting the show further, you can sponsor a class or advertise in our 2026 programme. Just reach out—we'd be happy to hear from you!

 Setting a hire standard...

Top Quality Hire Equipment

FOR ALL YOUR GARDEN PROJECTS

ACACIA GROUND CARE PROUDLY SUPPORTING Small Dole Summer Fayre

WE OFFER

DOMESTIC & COMMERCIAL HIRE | SERVICE | REPAIR | SALES

BASED IN HENFIELD COVERING THE SOUTH OF ENGLAND

WE COLLECT AND DELIVER

Call 01273 494939 | www.acaciarental.com
 Acacia Groundcare, Hollands Lane, Henfield, BN9 5QY
 Monday to Friday - 8:00am to 5:30pm




BH BANK HOUSE ELECTRIC GATES

For over 30 years, our electric gates have provided security and style for homes and businesses.

01273 494807

www.bankhousegates.com
info@bankhousegates.com







TR ENERGY
 ELECTRICAL CONTRACTORS

Do you need an electrician?

Local electrical contractors


Friendly and reliable service

All aspects of electrical work

Over 10 years experience

Call now for a free quote
01273 936222

www.TR-Energy.co.uk



SPONSOR A CLASS

The Small Dole Flower Show is not run for profit, but it is costly to organise. We rely on sponsors to help meet the expenses.

You are invited to donate £20 to sponsoring a class in the show.

Some of your donation is given as prize money for the class and the rest towards the cost of the show. Sponsors names will be displayed in the show marquee (unless you wish to remain anonymous).

To donate please contact a member of the organising committee or email smalldoleshow@hotmail.com.

Thank you again to all those who generously sponsored our last event in 2022.

SHOW SUPPORTERS

In addition to our Class Sponsors and Advertisers the Society would like to thank the local businesses and shops that are distributing the exhibit schedules.

Our sincere thanks to Mackley Industrial Estates for all their help and for allowing us to use their sports field year on year. We are delighted to have attracted some local businesses to advertise in our schedule and appreciate all their support too.

We would like to say thank you to all of the organisers and volunteers who help put the day together. Their support and enthusiasm is unwavering, but we always need extra helpers to help run the event. Please contact us if you think you might be able to help on the day or with the organisation.


SWAINS
 FARM SHOP & GARDEN CENTRE

A family run farm shop stocking a large selection of seasonal fresh fruit and vegetables, on-site butchers, locally grown plants, compost and much more.

Why not grab an ice cream and say hello to the animals this Summer?
 Less than 20 minutes walk from Henfield High Street through beautiful woodland.




OPEN MONDAY - SATURDAY 8.30AM - 6PM
 SUNDAY & BANK HOLIDAYS 10AM - 4PM

01273 494582 | info@swainsfarmshop.co.uk
www.swainsfarmshop.com





GOLDEN BARN GARAGE

FROM FERRARIS TO FIATS, WE PROVIDE A
5 STAR SERVICE FOR EVERY VEHICLE



UNIT 12, GOLDING BARN INDUSTRIAL ESTATE, HENFIELD ROAD, SMALL DOLE, WEST SUSSEX, BN5 9XH

INFO@GOLDENBARNGARAGE.COM

01903 810055

WWW.GOLDENBARNGARAGE.COM

SHOW RULES

1. All entry forms with fees must be received by the Show Secretary or a committee member by the Tuesday preceding the show. No entry will be accepted after that date. The Secretary will be in the Village Hall on that Tuesday between 7pm and 8pm to record entries. This rule will be strictly enforced.
2. All exhibits in 1, 2 and 3 must have been cultivated by the exhibitor in their garden or allotment and have been in his or her care for two months prior to the show. Any exhibitor showing in these classes flowers, vegetables or fruit grown elsewhere will be disqualified and forfeit any prizes. Entries in sections 4 to 9 must be the exhibitors own work.
3. All entries must be staged between 7.30am and 10.00am on show day. A warning bell will be rung at 9.45am and the marquee cleared of exhibitors at 10.00am.
4. Only one exhibit may be staged by an exhibitor in any one class. The description and quality of flowers or vegetables must be as staged in the schedule otherwise an entry will be disqualified. Vegetables roots must be clean and onions must not be skinned. All pot sizes are measured at the rim.
5. The merit of any entry will be judged not only on quality but also on the display arrangement.
6. All entries are accepted on condition that the committee may have access to visit the exhibitors garden or allotment after entries have been submitted.
7. No exhibit shall be removed from the show tables before 4.30pm. Exhibitors wishing to claim exhibits must do so between 4.30pm and 5.00pm. Thereafter any that remain may be sold for the benefit of the society funds.
8. Prizes in any class may be withheld when there are less than five entries or if the judges deem the entries not to be of sufficient merit. Prize money will be paid on the day of the show. Any left unclaimed will deem to have been donated to the society funds. Trophies (or the bases) should be left with the secretary after the show and will be delivered once engraved - they must be returned no later than the Tuesday before the show in the following year. The points awarded for trophies will be 3 for first, 2 for second and 1 for third place.
9. The decision of the steward, including matters not covered by the rules, will be final, and any complaint must be lodged in writing by 4.00pm on the day of the Summer Show.
10. Although every care will be taken to safeguard entries, the committee will not be responsible for losses or damage.
11. By entering you acknowledge and accept these Show Rules and our General Data Protection Regulation (GDPR) policy (available on request).



Fionas at Stokes of Henfield

Step into Stokes, your charming village shop at the heart of Henfield. Discover a colourful world filled with gifts, toys and where every shelf is packed with treasures

Enjoy

Pick 'n' Mix sweets

Ice Cream Parlour

Milkshakes

*Fionas
at
Stokes*

Gifts

Toys

Cards & Balloons

Makeup & Beauty

1 Commercial Buildings, High Street, Henfield BN5 9DE

HOW TO ENTER THE SUMMER SHOW

Please familiarise yourself with the Show Rules on the previous page.

Complete the entry form on the centre page in this schedule, further entry forms can be obtained by emailing:

smalldoleshow@hotmail.com.

Registration of entries for the 2025 Small Dole Summer Fayre will take place at Small Dole Village Hall on Tuesday 5th August between 7pm and 8pm.

Please email us if you are unable to register at this time and alternative arrangements can be made.

Entry fees are 30p per exhibit. Children's classes are free.

Display exhibits should be staged between 7.30am and 9.45am on the day of the show. Flower vases are available, other containers are to be provided by the exhibitor.

All trophies are held for one year only and must be returned by the Tuesday before the show at the latest.



MOTORCYCLE MOT's



SERVICE & REPAIR



Unit 24, Henfield Business Park

01273 495405

www.boretech.co.uk

ADDITIONAL AWARDS

Oreham Cup for the most points in show.

W.J. Harris Cup for the best gladioli exhibit in the show.

Bert and Vera Fish Cup for the best dahlia exhibit in the show.

David Bubloz Cup for the best potatoes in the show.

Joan Carr Cup for best in class 17.

CASH PRIZES

Children's classes - section 9

1st = £3

2nd = £2

3rd = £1

All other classes - sponsored

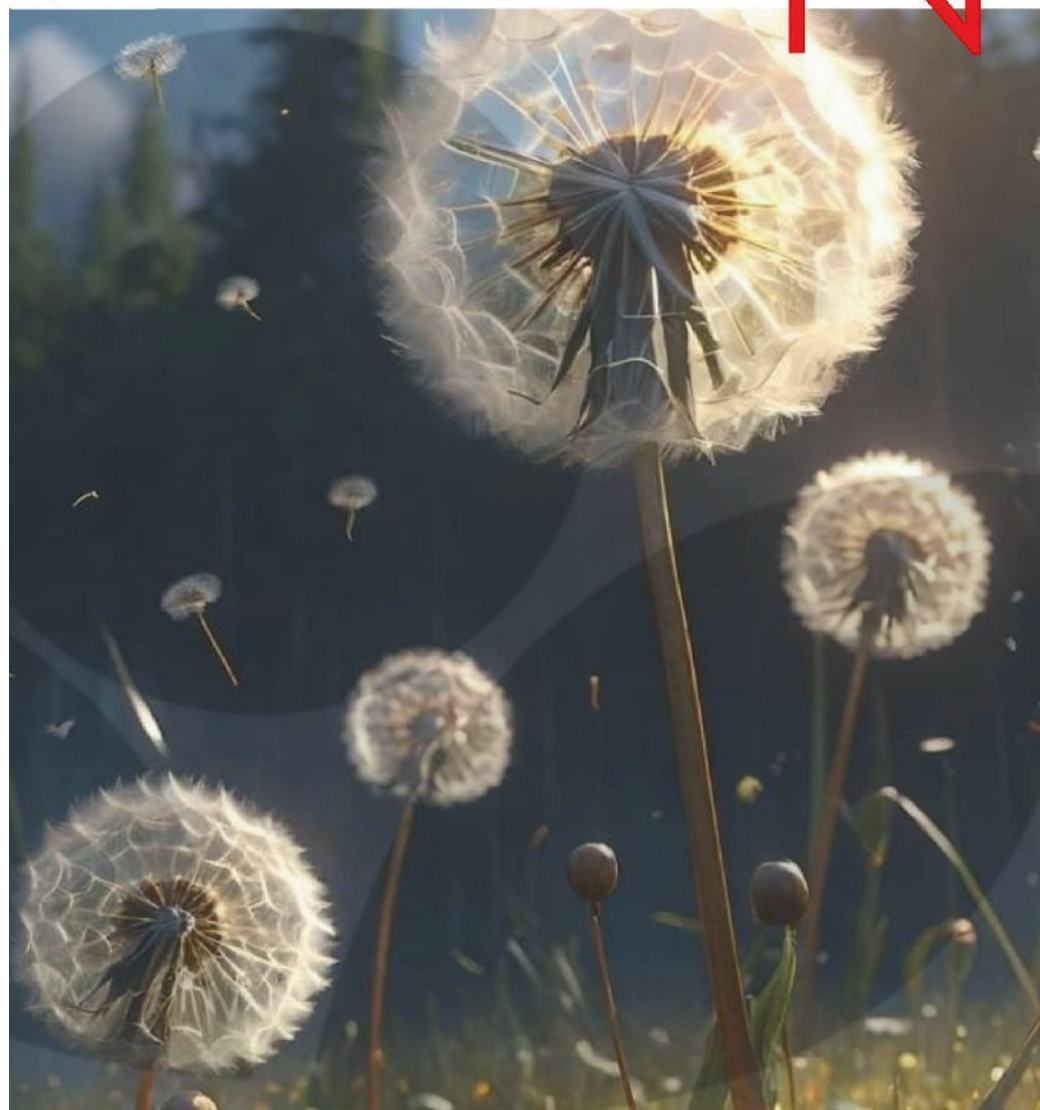
1st = £5

All other classes

Certificate only

Cash prize of £5 for both the lady and gentleman with the highest number of points in the show.

Δ.S T E M N





**OUT AND ABOUT
CAMPERS**

**CAMPERVAN
CONVERSIONS & SALES**

WWW.OUTANDABOUTCAMPERS.CO.UK
TEL:- 01273 257860

**CAMPERVAN
CONVERSIONS
FROM
£20,000**

**READY TO
DRIVE AWAY
STOCK
AVAILABLE**



NATURAL ALIGNMENT
STEMNATURE@MAIL.COM

C ₃	H ₄	O ₁	L ₁
O ₁	S ₁		

SECTION 1 FLOWERS

Ellert Cup for the most points in section 1

1. One dahlia - decorative large or giant (22cm or over)
2. Three dahlias (17-22cm)
3. Three dahlias - small decorative (11.5-17cm)
4. One dahlia - large or giant cactus or semi-cactus
5. Three dahlias - medium cactus or semi-cactus
6. Three dahlias - small cactus or semi-cactus
7. Three dahlias - water lily
8. Three dahlias - ball
9. Three dahlias - pompom (not to exceed 5cm)
10. Three dahlias- any other kind
11. Five single asters
12. Five double asters
13. Three gladioli - complete single spikes
14. Single gladioli
15. Five sweet peas
16. One vase of three stems of spray chrysanthemums
17. A bunch of cut flowers - tied
18. One pot plant - flowers (max pot size 15cms)
19. One pot plant - flowers (pot size 15cms or over)
20. One pot plant - foliage (max pot size 15cms)
21. One pot plant - foliage (pot size 15cms or over)
22. One specimen rose
23. One stem of hydrangea - any variety
24. Any flower - one perfect bloom
25. Fuchsia in a pot (max pot size 20cm)
26. Pelargonium in a pot (max pot size 20cm)
27. Delphinium - one spike
28. Three stems of spray chrysanthemums



THE FOX

IN SMALL DOLE

Proud to be supporting the Small Dole show.

The bar will be open all day on Saturday 9th August so why not pop in for a drink



Henfield Road, Small Dole BN5 9XE
01273 491196



Nursery

High quality care & education for children aged 0-5 in a rural setting just five minutes from Henfield

7.30am-7.00pm
51 weeks of the year



Opening times to suit your life

For more information please contact Laura on 01273 640686
laura@oscarbear.co.uk

www.oscarbear.co.uk

Henfield HOME CHECKS



A tailored service to suit your needs and support our local community

Contact us:
Availability now
01273 492 629

Available Monday to Friday
8am - 7pm

Services we offer:

- Companionship care
- Meal services
- Medication reminders
- Domestic duties
- Admin support and guidance
- Concierge
- Ad hoc cover
- House hold help
- Respite visits/cover
- Holiday cover
- Visits up to 8 hours

We cover: Henfield, Partridge Green, Cowfold, Hassocks, Wineham, Twineham, Steyning, Bramber, Upper Beeding and Shoreham




Proud sponsors of Small Dole Summer Fayre
www.henfieldhomechecks.co.uk



ENTRY FORM 2025

Please mark the class numbers in which you intend to exhibit and complete the bottom panel.

1	2	3	4	5	6	7	8	9	10
11	12	13	14	15	16	17	18	19	20
21	22	23	24	25	26	27	28	29	30
31	32	33	34	35	36	37	38	39	40
41	42	43	44	45	46	47	48	49	50
51	52	53	54	55	56	57	58	59	60
61	62	63	64	65	66	67	68	69	70
71	72	73	74	75	76	77	78	79	80
81	82	83	84	85	86	87	88	89	90
91	92	93	94	95	96	97	98	99	100
101	102	103	104	105	106	107	108	109	110
111	112	113	114	115	116	117	118	119	120
121	122	123	124	125	126	127	128	129	130

Name Address

Telephone.....

Total Fees.....

Received by

Age (for section 9 only)

Email

This information is required should we wish to contact you and is confidential

ENTRY FORM 2025

Please mark the class numbers in which you intend to exhibit and complete the bottom panel.

1	2	3	4	5	6	7	8	9	10
11	12	13	14	15	16	17	18	19	20
21	22	23	24	25	26	27	28	29	30
31	32	33	34	35	36	37	38	39	40
41	42	43	44	45	46	47	48	49	50
51	52	53	54	55	56	57	58	59	60
61	62	63	64	65	66	67	68	69	70
71	72	73	74	75	76	77	78	79	80
81	82	83	84	85	86	87	88	89	90
91	92	93	94	95	96	97	98	99	100
101	102	103	104	105	106	107	108	109	110
111	112	113	114	115	116	117	118	119	120
121	122	123	124	125	126	127	128	129	130

Name Address

Telephone.....

Total Fees.....

Received by

Age (for section 9 only)

Email

This information is required should we wish to contact you and is confidential

Selling & Letting homes in
Small Dole & the surrounding
areas since 1887

H.J. BURT
Chartered Surveyors : Estate Agents

**SALE
AGREED** S.T.C
www.hjburt.co.uk

H.J. BURT
Chartered Surveyors : Estate Agents

Steyping - 01903 879488

Henfield - 01273 495392

sales@hjburt.co.uk - www.hjburt.co.uk - www.mayfairoffice.co.uk

Find us on X, Facebook, Instagram & YouTube



SECTION 2 VEGETABLES & FRUIT

Woods Mill Challenge Cup for the most points in section 2

29. Two beetroot - globe
30. Five potatoes - any variety
31. Pair of "jacket" potatoes
32. Five onions from seed (show with 4 inch flags)
33. Five onion sets
34. Five giant shallots
35. Five pickling shallots (max size 2.5cm)
36. Five runner beans
37. Five French beans
38. One marrow
39. Three carrots - long tapering
40. Three carrots - short stump rooted
41. One cucumber
42. Five tomatoes
43. Two courgettes
44. Five eating apples
45. Three sweet corn cobs
46. Pair of leeks
47. Collections of herbs - three kinds in a pot
48. Longest runner bean
49. Any odd shaped vegetable
50. Three peppers
51. Two cabbages
52. Three sticks of rhubarb
53. Five plums
54. Three vegetables of the same kind (excluding those already listed)
55. Three fruits of the same kind (excluding those already listed)

- Payroll • Bookkeeping • Self Assessment
- Corporation Tax • Personal Tax Returns
- Accounts Preparation

Get some tax advice
for your business.

Book now for your
FREE Consultation
The Barn, Golden Square,
Henfield, BN5 9DP

t 01273 491112
e info@abmmatters.com
w www.abmmatters.com



HENFIELD VILLAGE CARS

01273 491888

Your local taxi company



- * All journeys catered for, long or short
- * 24 hr Service (subject to availability)
- * 5 vehicles, including 8 seater

www.henfieldvillagecars.co.uk



ESTABLISHED 26 YEARS

SECTION 3 FLOWERS & FRUIT

Tottington Challenge Trophy for the most points in section 3

56. Tray containing five different vegetables
(only one variety of each)

Albert Fish Cup for the winner of class 56.

57. Display of two vases of flowers, each with three stems
of the same variety and three varieties of vegetables (three
of each variety)

Charlie Fish Cup for the winner of class 57.

58. Trug or basket of four different vegetables
(maximum three of any kind)

Ann Phillips Cup for the winner of class 58.

59. A celebration arrangement commemorating
VE Day.

Muriel Gretton Cup for the winner of class 59.

60. Collection of kitchen garden vegetables - non show
quality (minimum of five vegetables with three of each kind)

61. Planted floral container of any size - displayed outside
tent

Olive Wellstead Cup for the winner of class 61.

Grommets®
UK Rubber Moulding Manufacturing Company

Proud supporters of local clubs, charities and events



www.grommets.co.uk
Unit 2 Hollands Lane Industrial Estate, Henfield, BN5 9QY
01273 494400 - sales@grommets.co.uk



SECTION 4 FLORAL ART

Noakes Cup for the most points in section 4

- 62. An arrangement in celebration of VE Day (maximum 24" allowed)
- 63. An arrangement in a picture frame (maximum 20" allowed)
- 64. "Our Beautiful Landscape" An arrangement to the South Downs (maximum 20" allowed)
- 65. Miniature Garden using mostly natural materials (maximum size 15" x 9")

Please be sure to check the size of your exhibit, oversize exhibits will be disqualified.

SECTION 5 HANDICRAFTS

Drummond Cup for the most points in section 5

Sadlington Goblet for best lace of any type, including crochet and knitting

- 66. A hand-knitted garment using any type of yarn
- 67. Exhibit of needlework or patchwork
- 68. Exhibit of embroidery or tapestry (mounted or framed)
- 69. Exhibit of embroidery or tapestry (unmounted or unframed)
- 70. Make a soft toy
- 71. Hand-knitted article (using 1, 2, 3 or 4 ply wool)
- 72. Hand-knitted article (DK, Chunky or Aran)
- 73. Exhibit of crochet or lace
- 74. Any handicraft

SECTION 6 ART & PHOTOGRAPHY

Stewart Christie Cup for the most points in section 6

Entries must not be signed or previously exhibited at the Flower Show.

- 75. Painting in any media
(maximum size 61cm x 61cm / 24" x 24")
- 76. Pen, ink and wash painting
(maximum size 46cm x 30cm / 18" x 12")
- 77. Any drawing
(maximum size 46cm x 30cm / 18" x 12")

Please write your name on the back of entries in classes 78-82.

Exhibits in classes 78-81 must be unmounted, maximum print size 18cm x 13cm / 7" x 5"

- 78. Colour photograph titled "Where I live"
- 79. Colour photograph of a village pub
- 80. Colour photograph titled "Weather"
- 81. Close-up colour or black and white photograph
- 82. Photographic enlargement of any subject (maximum size 40cm x 30cm / 16" x 12")

FIND US ON FACEBOOK

The Small Dole Flower Show has a Facebook page, we would really appreciate it if you took the time to like it here:

www.facebook.com/smalldolesummerfayre

SECTION 7 RECIPE CHALLENGE

Small Dole W.I CUP for the best exhibit in section 7

83. Summer Berry Drizzle Loaf

Ingredients:

- 2 large eggs
- 2 tsp vanilla extract
- 175g fruit weight after diced and stoned
- 140g granulated sugar
- 1-2 tbsp citrus juice
- 175g soft butter
- 175g golden caster sugar
- 250g self raising flour

Method:

1. Heat oven to 180C/160C fan/gas 4. Grease a 900g/2lb loaf tin and line the base and ends with a long strip of baking parchment. Put the butter, caster sugar, flour, eggs and vanilla extract into a large bowl and beat with an electric hand mixer for 5 mins until pale and creamy – the mixture will be very thick.
2. Spread one-third of the cake mix into the tin, then scatter over 50g of the fruit. Carefully dot and spread another third of the cake mix on top, and scatter with another 50g fruit. Finally dot the rest of the cake mix over and gently spread with the back of a spoon. Bake for 1 hr, until an inserted skewer comes out clean.
3. Poke the cake all over with a skewer. Put remaining 75g fruit into a bowl with the granulated sugar. Stir in 1 tbsp of the citrus juice first with a fork, mashing a little of the fruit as you go. If it's a bit dry, add a splash more juice and spoon over the cake. Leave in the tin until the cake is cool and the topping is set and crisp.

SECTION 8 COOKING & PRESERVES

Gluckstein Cup for the most points in section 8

84. One pot of jam of your choice
85. One pot of marmalade of your choice
86. One pot of lemon curd
87. Fruit pie of your choice
88. Five shortcrust pastry sausage rolls
89. Three boiled beetroots as cooked
90. Homemade summer drink
91. Five rock cakes
92. Five fruit scones
93. One jar of chutney
94. Three stuffed tomatoes
95. Decorated Victoria sandwich
96. Five pieces of fudge of your choice
97. Five chocolate chip cookies
98. Large quiche of your choice
99. A round of shortbread
100. Five individual meringues
101. Sourdough loaf
102. Five decorated gingerbread people



Pleased to be supporting the Small Dole 2025 Summer Fayre!

Established for over 25 years
5 star licenced cattery
Secure heated modern pens
Peaceful countryside surroundings
Viewings welcome by arrangement

01273 492259
07768 462444
info@eastmeadboardingcattery.co.uk
www.eastmeadboardingcattery.co.uk
New Hall Lane, Small Dole BN5 9YH

SECTION 9 CHILDREN

Marjorie Clothier Shield for the most points in section 9

Name and age to be shown on the entry form.

Parental assistance must be minimal.

AGE 4 & UNDER

Oreham Playgroup Cup for the most points in classes 103-107

- 103. Five jam tarts
- 104. An animal made out of recycled materials
- 105. Five decorated (shop bought) Rich Tea Biscuits
- 106. A collage made from my garden (maximum size A4)
- 107. Fruit or vegetables I have grown in my garden

AGE 5 - 7 YEARS

Carol Barrett Cup for the most points in classes 108-115

- 108. A miniature garden using mainly natural materials (max size 15 x 9 ins)
- 109. Any handicraft or needlework
- 110. Five jam tarts
- 111. Make a robot out of recycled materials
- 112. A flower arrangement in an unusual container
- 113. A drawing or painting of summer (maximum size A4)
- 114. A colour photograph of an animal (maximum size 7" x 5")
- 115. Fruit or vegetable(s) I have grown in my garden

AGE 8-11 YEARS

Marjorie Carreck Cup for the most points in classes 116-123

- 116. A miniature garden using mainly natural materials (maximum size 15 x 9 ins)
- 117. Any handicraft or needlework
- 118. Handwriting sample - paragraph from your favourite book not illustrated (maximum size A5)
- 119. Five chocolate chip cookies
- 120. A flower arrangement in an unusual container
- 121. A drawing or painting of summer (maximum size A4)
- 122. A colour photograph titled "Where I Live" (maximum 7" x 5")
- 123. Fruit or vegetable(s) I have grown in my garden

AGE 12-16 YEARS

S.A. Fish Cup for the most points in classes 124-130

- 124. A miniature garden using mainly natural materials (maximum size 15" x 9")
- 125. Any handicraft or needlework
- 126. Five chocolate chip cookies
- 127. A flower arrangement in an unusual container
- 128. Design a birthday card for a friend (maximum size A6)
- 129. A colour photograph of titled "Where I Live" (maximum 7" x 5")
- 130. Fruit or vegetable(s) I have grown in my garden

HAWTHORN VETS FUN DOG SHOW

Kindly sponsored by AHS - aerielandhandlingservices.com

Rosettes to 4th place plus 'specials'

Entries will be taken on the field

Entry fees £2

All dogs must be kept on a lead

Bitches in season and puppies under 6 months are not allowed on the field.

- Best Puppy (6-12 months)
- Prettiest Pooch (male/female)
- Waggiest tail
- Best child handler (11 years and under)
- Golden Oldies (10 years+)
- Best doggy fancy dress

BEST IN SHOW - Free entry for winners of previous classes



LAUREN GROOMZ



1-2-1 dog grooming in a home environment

Small Dole, BN5

07960 128076

laurengroomz@gmail.com



Opening in
Hassocks on
8th July 2025

Your Local Established
Independent Veterinary Practice







We are refurbishing and redesigning the site at Rear, 44 Keymer Road in Hassocks, to offer a complete service to the pets and residents of Hassocks and the surrounding area.

A new branch, but the same exceptional standards of veterinary care clients of Hawthorn know and trust.

Check out our 5 Star
Google reviews!



The facilities will include:

-  Operating theatre with full surgical facilities
-  Diagnostic equipment including X-ray and Ultrasound
-  Dental facilities including dental Xray
-  In house laboratory to allow blood and urine results on the same day
-  Separate Dog and Cat wards
-  Opening hours 8.30am-6pm Monday-Friday and 8.30-12pm Saturday

PRE REGISTER TO RECEIVE A DISCOUNT OFF YOUR FIRST VISIT!

The first **100** new clients to register will receive a **50% DISCOUNT** off their first consultation, all others will receive a **10% discount**. To register is simple - just scan the QR code, register on our website or call us and quote the reference **HASSOCKS** to obtain the discount which will be applied to your first visit at any of our practices.

Terms and Conditions:

Discount applicable on consultation fees only, cannot be used in conjunction with any other offer. Offer expires 30th June 2026.



SCAN TO
PRE-REGISTER
ONLINE!

TEL: 01273 805009

www.hawthornvets.co.uk

MACKLEY

Engineering a
sustainable future



Protecting the south's coastlines & rivers,
enhancing the natural environment and
helping our communities prepare for a
sustainable future.

Thank you for bearing with our Head Office renovation works in
Small Dole. We are updating our site on the Mackley Industrial
Estate to help maintain our 90 year legacy in the area.

www.mackley.co.uk

01273 492 212

